



Shaft Mounted Speed Reducer Gear

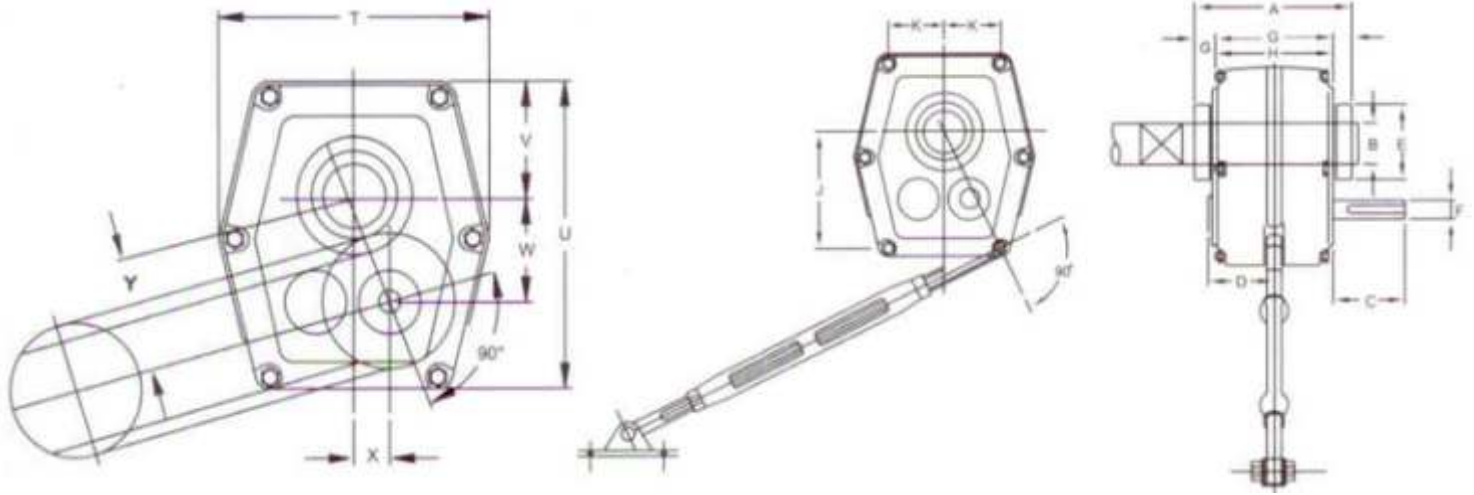


TABLE-A

Type	A	øB	C	D	øE	øF	INPUT SHAFT KEY WAY	G	H	J	K	L	M	N
B	141	SEE TABLE B	63	51	80	19	6 X 3.5 X 57	19.5	102	142	50.5	29	22	76
C	147		65	54	90	22	6 X 3.5 X 60	19.5	108	160	51.0	29	22	76
D	154		75	63	100	25	8 X 4 X 65	20.0	114	188	78.5	29	22	76
E	168		78	65	115	28	8 X 4 X 68	22.0	124	228	85.0	29	22	76
F	194		92	74	130	32	10 X 5 X 88	28.5	137	242	100.5	29	22	76
G	247		99	87	145	38	10 X 5 X 92	28.5	190	290	116.0	29	22	76
H	274		110	95	170	48	12 X 7 X 108	28.5	217	327	126	70	50	121
J	257		135	119	200	55	16 X 6 X 110	30.0	197	424	102.0	70	50	121

TABLE-B

TYPE	O	øP	Q	R	S MIN / MAX.	T	U	V	W	X	U	APX. CAPACITY LTRS.	APX. WEIGHT IN KG
B	3.5	9.5	151.5	240	480 / 580	191	242	81	75	25	79	0.6	16.0
C	3.5	9.5	151.5	240	480 / 580	220	280	104	90	31	95	1.0	22.0
D	4.0	9.5	179.0	266	532 / 632	262	332	117	110	37	116	1.5	34.5
E	4.0	9.5	179.0	266	532 / 632	279	387	140	125	43	133	2.0	45.2
F	4.0	9.5	179.0	266	532 / 632	322	410	150	141	50	150	2.5	68.5
G	4.0	9.5	179.0	266	532 / 632	367	472	165	156	56	166	4.5	102.2
H	17.5	16.0	222.0	375	750 / 900	434	540	194	189	62	200	7.2	135.0
J	17.5	16.0	222.0	375	750 / 900	542	700	254	255	75	266	16.0	195.0

Notes:

- All dimensions are in mm
- These dimensions are for primary use only and subject to our confirmation
- Shaft dia. tolerance upto 58 dia K6 and above 58 dia M6.



Shaft Mounted Speed Reducer Gear

TABLE-B

B	HUB BORE	ø 25	ø 30	ø 40	ø 1"	ø 1.1 / 2'		
	KEY WAY	8 X 3.5	8 X 3.5	12 X 3.5	1/4" X 1/8"	3/8" X 3/16"		
C	HUB BORE	ø 35	ø 40	ø 1.1/4"	ø 1.1/2"			
	KEY WAY	10 X 3.5	12 X 3.5	1/4" X 1/8"	3/8" X 3/16"			
D	HUB BORE	ø 38	ø 40	ø 45	ø 50	ø 1.1/2"	ø 1.3/4"	ø 2"
	KEY WAY	10 X 3.5	12 X 3.5	14 X 4	14 X 4	3/8" X 3/16"	3/8" X 3/16"	1/2 X 1/4"
E	HUB BORE	ø 45	ø 50	ø 55	ø 1.3 / 4"	ø 2"	ø 2.1 / 4"	
	KEY WAY	14 X 4	14 X 4	16 X 4.5	3/8" X 3/16"	1/2" X 1/4"	5/8" X 5/16"	
F	HUB BORE	ø 50	ø 55	ø 60	ø 65	ø 2"	ø 2.1 / 4 "	
	KEY WAY	14 X 4	16 X 4.5	18 X 4.5	18 X 4.5	1/2" X 1/4"	5/8" X 5/16"	5/8" X 5/16"
G	HUB BORE	ø 60	ø 65	ø 70	ø 75	ø 2.1/4"	ø 2.1/2"	ø 2.3/4"
	KEY WAY	18 X 4.5	18 X 4.5	20 X 5	20 X 5	5/8" X 5/16"	5/8" X 5/16"	3/4" X 3/8"
H	HUB BORE	ø 70	ø 75	ø 80	ø 85	ø 2.1/2"	ø 2.3 /4"	ø 3"
	KEY WAY	20 X 5	20 X 5	22 X 6	5/8" X 5/16"	3/4" X 3/8"	3/4" X 3/8"	3/4" X 3/8"
J	HUB BORE	ø 90	ø 95	ø 3.1/2"				
	KEY WAY	25 X 6	25 X 6	7/8" X 7/16"				

POWER RATING IN HP

INPUT RPM	GEAR RATIO	CAPACITY IN (HP)							
		B	C	D	E	F	G	H	J
1500	5	7.28	11.92	18.65	29.28	42.90	74.22	106.53	150.66
1000	5	5.60	9.04	14.16	22.21	32.54	56.32	80.80	124.26
750	5	4.82	7.60	11.90	16.68	27.37	47.36	68.00	104.53
500	5	3.57	6.16	9.65	15.14	22.18	38.40	55.06	84.66
1500	13, 20	2.74	4.66	7.30	11.46	16.80	29.06	41.73	64.13
1000	13, 20	1.89	3.52	5.50	8.46	12.66	21.90	31.45	48.40
750	13, 20	1.46	2.86	4.48	7.02	10.29	17.81	25.57	39.33
500	13, 20	0.92	1.88	2.93	4.61	6.74	11.68	16.76	25.73

SMSR



Notes:

- All dimensions are in mm
- These dimensions are for primary use only and subject to our confirmation
- Shaft dia. tolerance upto 58 dia K6 and above 58 dia M6.

☎ +91 98794 30132

☎ +91 96621 60816